



Kingfisher Barn, Upperfield Farm Old Field Lane

Kirk Ireton, Ashbourne, DE6 3LA

£1,300 Per Calendar Month

Available TO LET is a generous three bedroom, lovingly restored Derbyshire stone barn overlooking the calm waters of Carsington Reservoir. The entrance to the property leads into a generous Kitchen Diner, complete with cream matt finish wall and base units. Double electric oven and induction hob, integrated fridge freezer & dishwasher. Downstairs bathroom with low level WC, basin and shower cubicle with mains fed shower unit. A spacious living area with log burner and access to the rear decked area.

To the first floor are three double bedrooms and a modern 3pc bathroom suite with shower enclosure, heated towel rail, tiled floor. The front of the property has a raised paved area with spectacular views over the reservoir which leads to a lawned area and parking for two cars. To the rear of the property is a decked area accessed via the lounge. No Smokers. Available from 1st April 2025.

- Spectacular views over Carsington Water
- Spacious kitchen diner
- Private parking for two cars
- Lounge with log burner
- Three double bedrooms

Viewing

Please contact our Scargill Mann & Co Residential Lettings Office on 01332 206620 if you wish to arrange a viewing appointment for this property or require further information.



3



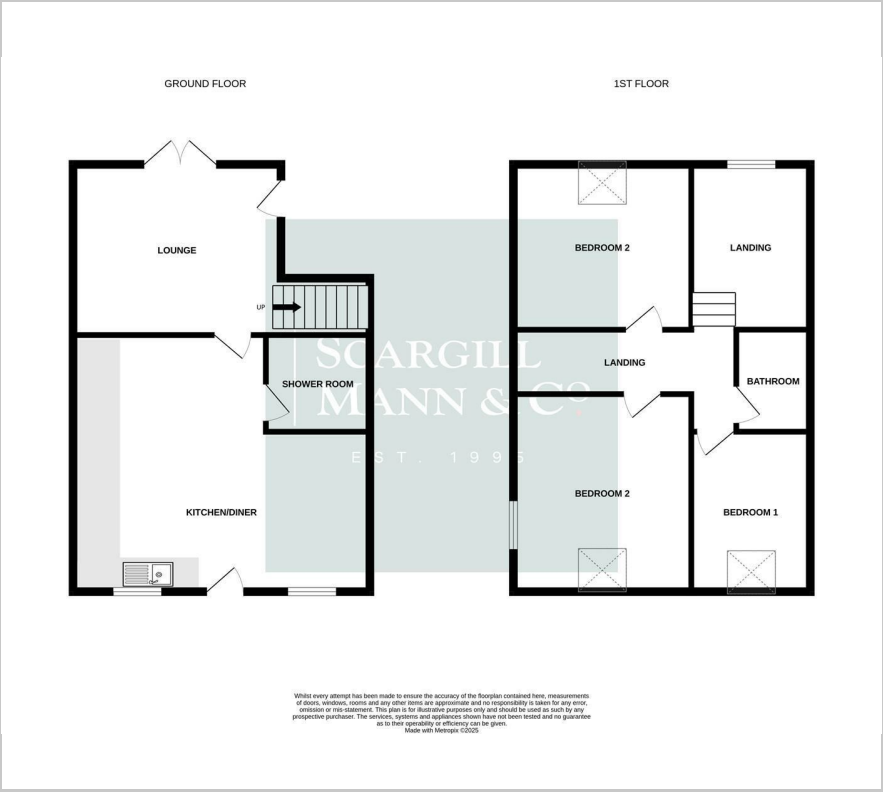
2



2



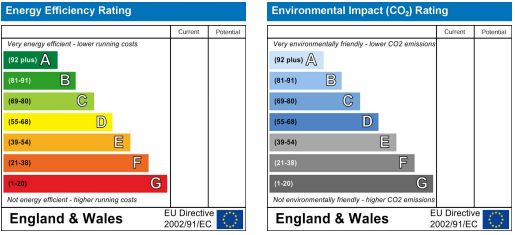
Floor Plan



Area Map



Energy Efficiency Graph



These particulars, whilst believed to be accurate are set out as a general outline only for guidance and do not constitute any part of an offer or contract. Intending purchasers should not rely on them as statements of representation of fact, but must satisfy themselves by inspection or otherwise as to their accuracy. No person in this firm's employment has the authority to make or give any representation or warranty in respect of the property.