



Apartment 3 Georgian Crystal House

Silk Mill Lane, Tutbury, DE13 9DU

£995 Per Calendar Month

A skilfully converted second floor four bedroom duplex apartment. Sought after village location. Close to amenities. Entrance hall, sitting room, open plan kitchen, double bedroom with en suite facilities, well appointed bathroom, master bedroom to upper level, galleried study / bedroom four and further double bedroom. EPC Rating D. No smokers. Available from 24th March 2025.

- Entrance hall
- Sitting room
- Open plan kitchen
- Double bedroom with en-suite facilities
- Well-appointed bathroom
- Master bedroom
- Galleried study/bedroom four
- Further double bedroom

Viewing

Please contact our Scargill Mann & Co Residential Lettings Office on 01332 206620 if you wish to arrange a viewing appointment for this property or require further information.



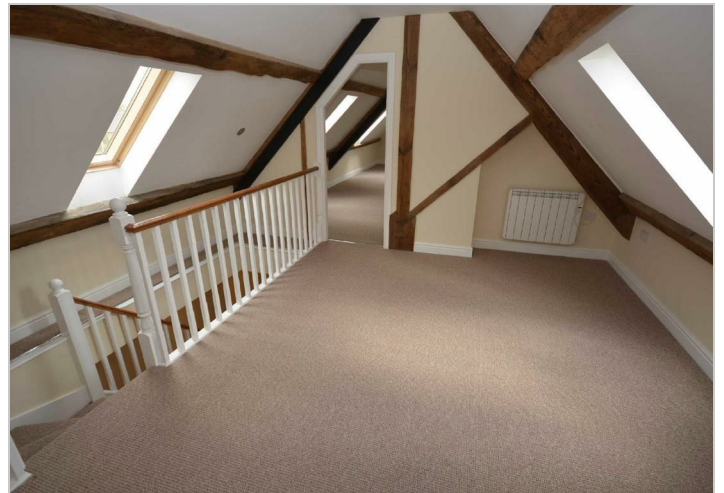
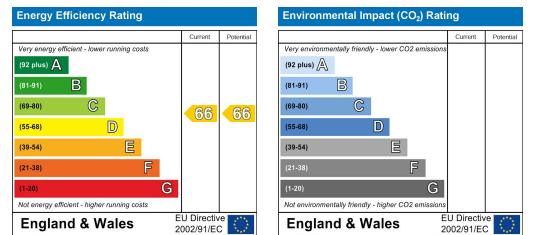
Floor Plan



Area Map



Energy Efficiency Graph



These particulars, whilst believed to be accurate are set out as a general outline only for guidance and do not constitute any part of an offer or contract. Intending purchasers should not rely on them as statements of representation of fact, but must satisfy themselves by inspection or otherwise as to their accuracy. No person in this firm's employment has the authority to make or give any representation or warranty in respect of the property.