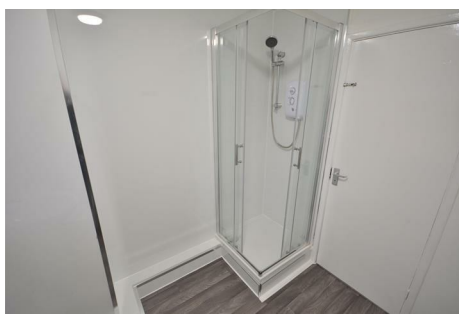


SCARGILL
MANN & CO

EST. 1995



Swinscoe House Rosengrave Street

, Derby, DE1 1PS

A recently refurbished, well presented two double bedroom first floor flat enjoying convenient position within easy reach of Derby city centre. Gas fired central heating. Sealed unit double glazing Entrance hall with intercom Spacious sitting room with feature balcony. Breakfast kitchen, two double bedrooms, well appointed bathroom with full suite with brand new shower cubicle. Viewing highly recommended. EPC Rating C. Employed only. No smokers. Available now.

£750 PCM

Swinscoe House Rosengrave Street , Derby, DE1 1PS



- City Centre Apartment
- Gas fired central heating
- Sealed unit double glazing
- EPC C
- New Bathroom
- Let & Managed by Scargill Mann & CO

GENERAL INFORMATION

LOCATION

ACCOMMODATION

ENTRANCE HALL

SITTING ROOM

14'11" x 11'8" (4.55 x 3.57)

FEATURE BALCONY

FITTED KITCHEN

11'1" x 7'9" (3.40 x 2.37)

BEDROOM ONE

12'2" x 9'7" (3.73 x 2.94)

BEDROOM TWO

14'10" x 9'5" (4.54 x 2.89)

BATHROOM

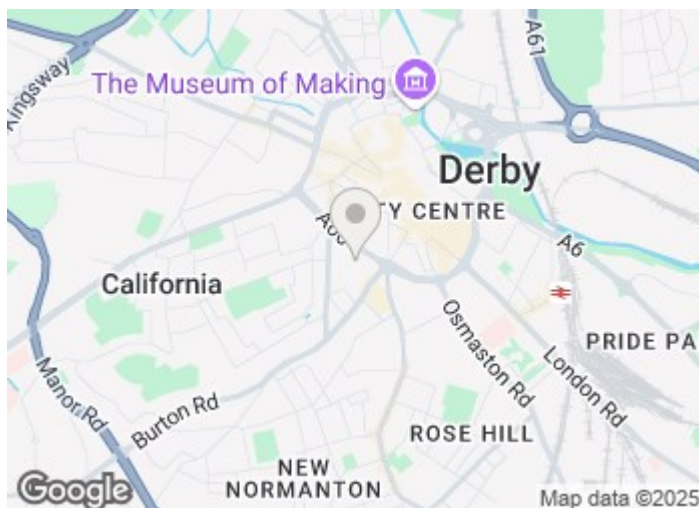
PROPERTY RESERVATION FEE

DEPOSIT

SPECIFIC REQUIREMENTS

VIEWING

ADDITIONAL INFORMATION



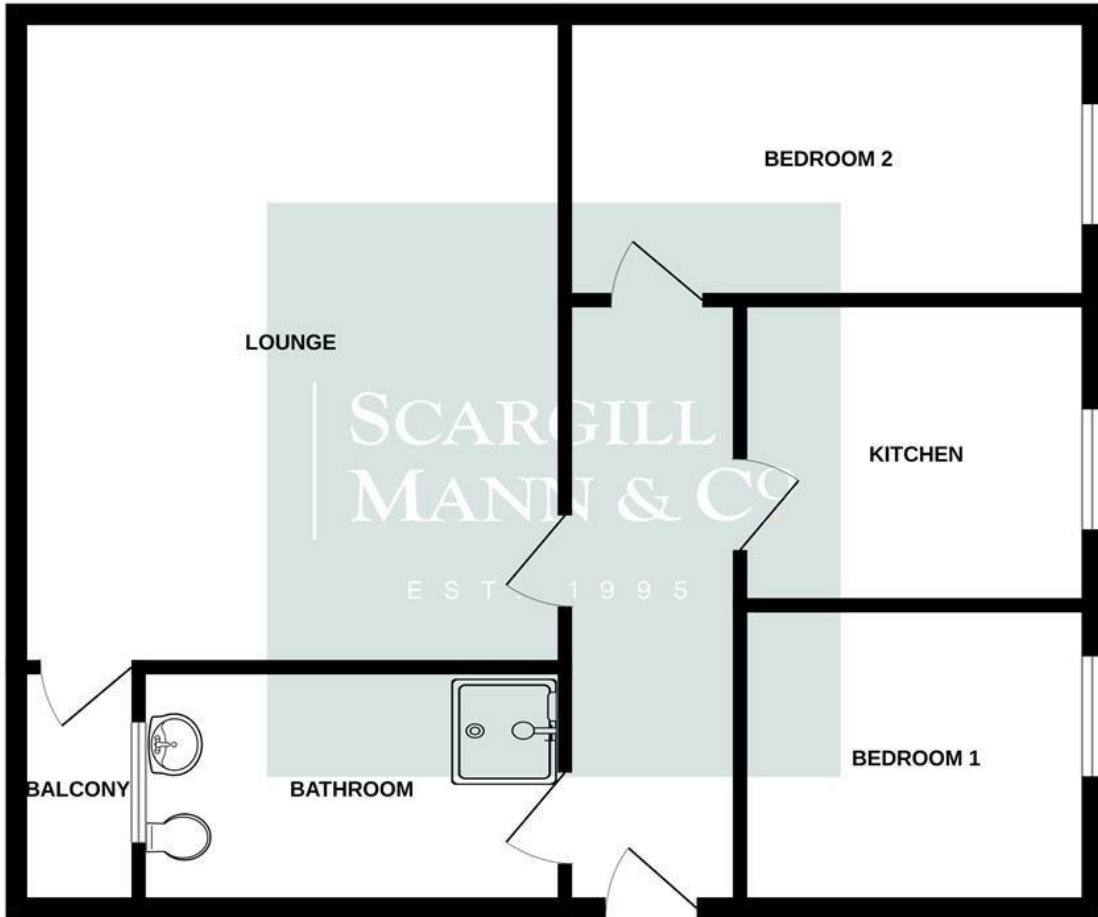
[Directions](#)





Floor Plan

GROUND FLOOR



Whilst every attempt has been made to ensure the accuracy of the floorplan contained here, measurements of doors, windows, rooms and any other items are approximate and no responsibility is taken for any error, omission or mis-statement. This plan is for illustrative purposes only and should be used as such by any prospective purchaser. The services, systems and appliances shown have not been tested and no guarantee as to their operability or efficiency can be given.
Made with Metropix ©2025

These particulars, whilst believed to be accurate are set out as a general outline only for guidance and do not constitute any part of an offer or contract. Intending purchasers should not rely on them as statements of representation of fact, but must satisfy themselves by inspection or otherwise as to their accuracy. No person in this firm's employment has the authority to make or give any representation or warranty in respect of the property.

