



60 Greenaway Lane

Hackney, Matlock, DE4 2QA

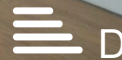
£795 Per Calendar Month

New to the market is a two bedroom end of terrace cottage presented to a modern standard throughout and taking in quite delightful southerly views over the valley. The property briefly comprises of; two double bedrooms, spacious lounge, and modern kitchen. Modern three-piece bathroom. EPC D, AVAILABLE FROM 31st December 2024.

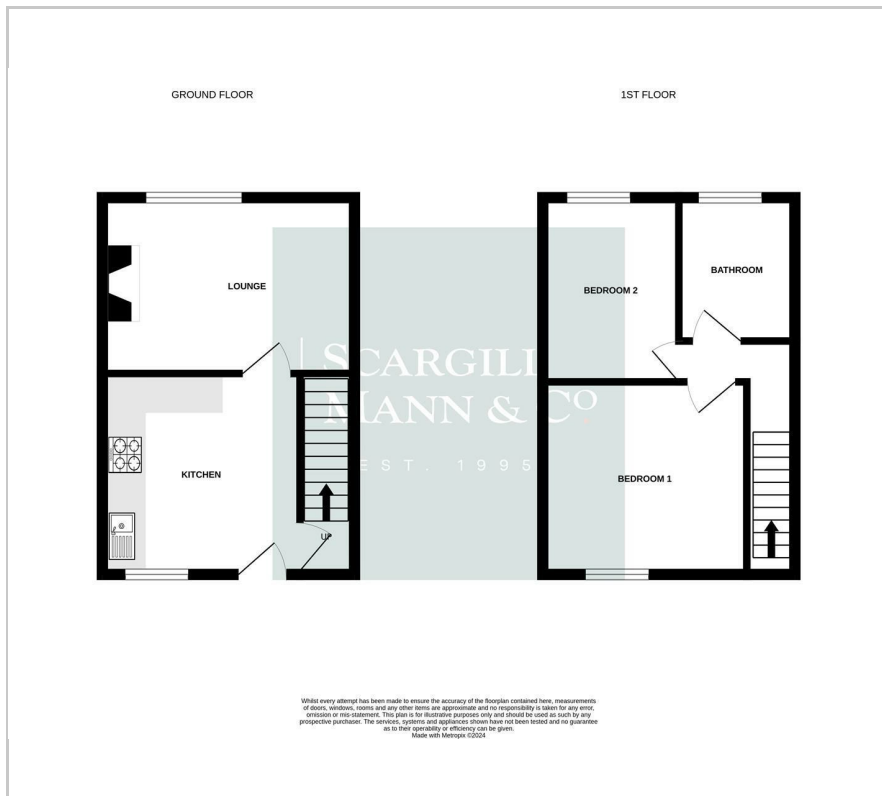
- Charming Cottage
- Gas central heating
- Modern kitchen
- End terrace
- Delightful views

Viewing

Please contact our Scargill Mann & Co Residential Lettings Office on 01332 206620 if you wish to arrange a viewing appointment for this property or require further information.



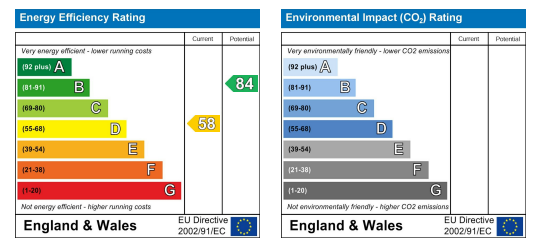
Floor Plan



Area Map



Energy Efficiency Graph



These particulars, whilst believed to be accurate are set out as a general outline only for guidance and do not constitute any part of an offer or contract. Intending purchasers should not rely on them as statements of representation of fact, but must satisfy themselves by inspection or otherwise as to their accuracy. No person in this firm's employment has the authority to make or give any representation or warranty in respect of the property.