



## 21a North Avenue

Mickleover, Derby DE3 9HX

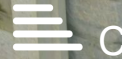
**£950 Per Calendar Month**

New to the market is a fully refurbished modern two-bedroom Coach House in the popular area of Mickleover, close to the Royal Derby Hospital. The property briefly comprises of; two double bedrooms, spacious lounge diner and brand-new kitchen. Brand new bathroom and utility area. EPC C. AVAILABLE NOW.

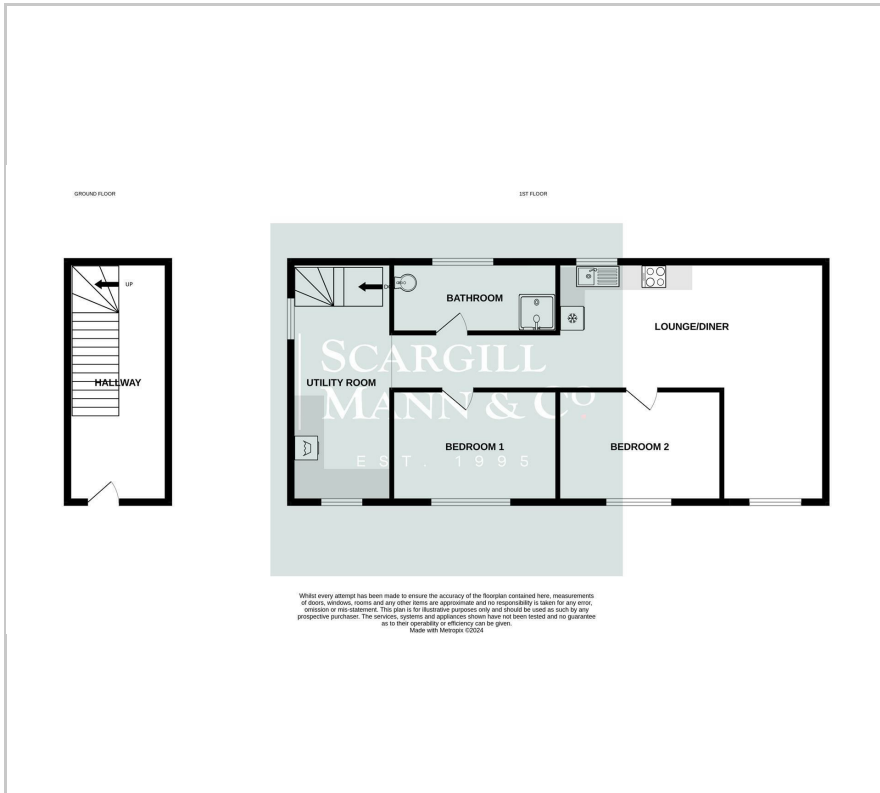
- Brand new refurbishment
- Gas central heating
- Utility area
- Two double bedrooms
- Close proximity to Royal Derby Hospital

### Viewing

Please contact our Scargill Mann & Co Residential Lettings Office on 01332 206620 if you wish to arrange a viewing appointment for this property or require further information.



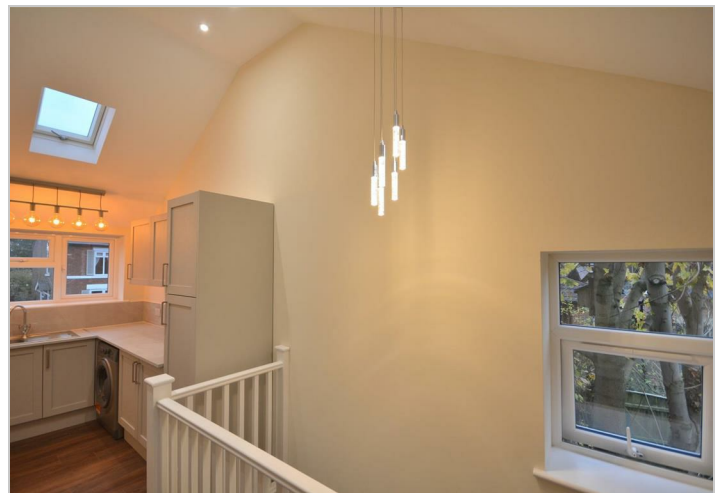
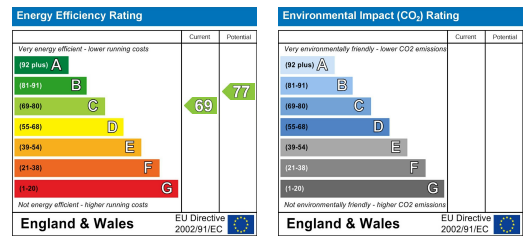
# Floor Plan



# Area Map



# Energy Efficiency Graph



These particulars, whilst believed to be accurate are set out as a general outline only for guidance and do not constitute any part of an offer or contract. Intending purchasers should not rely on them as statements of representation of fact, but must satisfy themselves by inspection or otherwise as to their accuracy. No person in this firm's employment has the authority to make or give any representation or warranty in respect of the property.