



Apartment 6
15-16 Market Place
Derby
DE1 3QF

£795 Per Calendar Month

SCARGILL
MANN & CO

EST. 1995

GENERAL INFORMATION

A unique opportunity to rent this one bedroomed apartment, enjoying highly convenient city centre position with views across the market place. The apartment itself has a secure communal entrance hall and is ideally suited to the single professional person or couple working in the centre of Derby.

LOCATION

The city itself offers a broad range of amenities and facilities to include restaurants, bars, clubs with a range of leisure centres and gyms. Major link roads can also be easily accessed to include the A38 the A52 connecting to other regional centres along with the motorway network.

ACCOMMODATION

ENTRANCE HALL

With doorway leading to

LIVING ROOM

4.72m x 3.31m

With superb views over the surrounding city.

FITTED KITCHEN

3.45m x 2.41m (11'3" x 7'10")

With a range of base and wall units, integrated oven with hob, sink unit with modern mixer tap, fitted work surfaces and ceramic wall tiling.

BATHROOM

With full white suite comprising: pedestal wash hand basin, low flush WC, and bath.

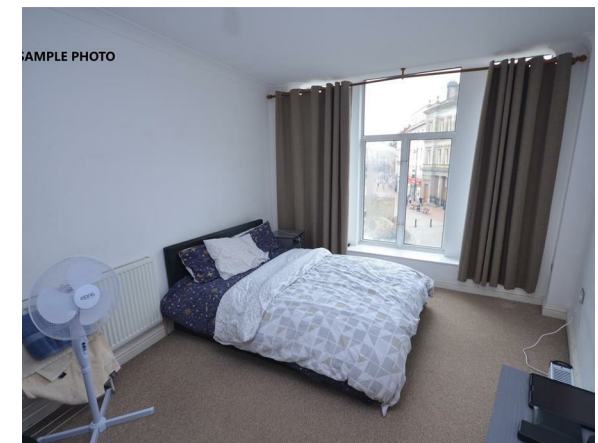
BEDROOM

DIRECTIONAL NOTE

Leave St James Street onto Market Place, the apartment is situated straight-ahead.

SPECIFIC REQUIREMENTS

The property is to be let fully furnished. No smokers. Available from 10th September 2024.





PROPERTY RESERVATION FEE

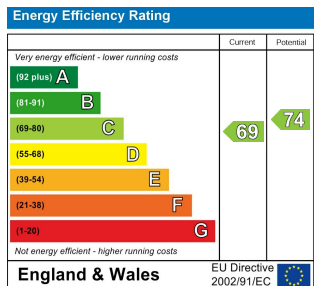
One week holding deposit to be taken at the point of application, this will then be put towards your deposit on the day you move in.
NO APPLICATION FEES!

DEPOSIT

5 Weeks Rent.

VIEWING

By prior appointment through Scargill Mann & Co on 01332 206620.



SALES OFFICE
 Unit 17 Eastgate Business Centre
 Eastern Avenue
 Burton upon Trent
 DE13 0AT
 T: 01283 548194 /01332 208820
 E: sales@scargillmann.co.uk

LETTINGS OFFICE
 17 Mallard Way
 Pride Park
 Derby
 DE24 8GX
 T: 01332 206620
 E: lettings@scargillmann.co.uk