



50 Queen Elizabeth Way

Ilkeston

DE7 4NT

£1,300 Per Calendar Month

-
- Beautifully presented
 - Large garden and entertainment area
 - Conservatory
 - Close to local amenities
 - Let & Managed by Scargill Mann & Co

SCARGILL
MANN & CO

EST. 1995

GENERAL INFORMATION

A beautifully presented, three bedroom family home with large conservatory and a large garden with entertainment area. The property in brief; comprises of a spacious lounge & diner, three bedrooms. One single room with built in wardrobes. Modern bathroom with shower cubicle. Large garden with entertainment area with wooden bar.

LOCATION

The property occupies a position close to Ilkeston town centre, which has a comprehensive range of popular shops, cafés, gymnasiums and also within easy access of local schools and hospital.

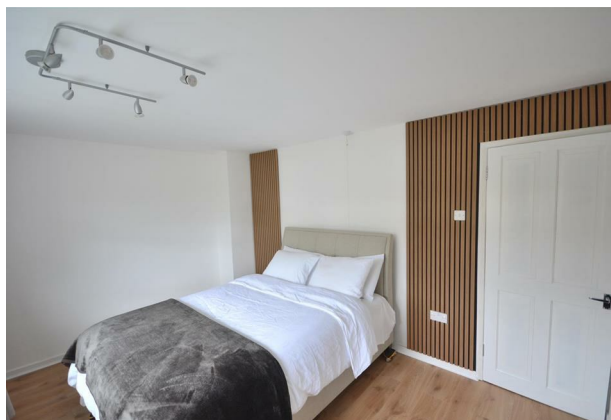
ACCOMMODATION

ON THE GROUND FLOOR

HALLWAY

Access through composite door, having radiator, storage space, double glazed frosted window to the front elevation and access to the kitchen and lounge/diner.





KITCHEN/BREAKFAST ROOM

4.43m x 3.75m (14'6" x 12'3")

Tiled flooring, gas central heating. With stainless steel sink unit with mixer taps over, full range of base cupboards with work surfaces over, tiled surrounds, inset induction hob with extractor fan above, built-in double electric oven, complimentary wall mounted cupboards, washing machine, fridge & freezer.

LOUNGE/DINER

5.63m x 4.21m (18'5" x 13'9")

Large lounge area with laminate flooring, electric fire with surround, gas central heating, double sliding doors to conservatory well presented.

CONSERVATORY

4.03m x 3.49m (13'2" x 11'5")

Great sized conservatory which over looks the impressive garden. Having wall mounted radiator and double glazed window to the side and rear elevations. Also having double glazed French doors to the side elevation.

TO THE FIRST FLOOR

BEDROOM ONE

2.99m x 1.86m (9'9" x 6'1")

Spacious double bedroom having double glazed window to the front elevation and radiator

BEDROOM TWO

4.23m x 2.98m (13'10" x 9'9")

Spacious double bedroom having double glazed window to the rear elevation and radiator.

BEDROOM THREE

2.99m x 1.86m (9'9" x 6'1")

Having double glazed window to the front elevation, storage cupboard and radiator.

BATHROOM

Having shower cubicle, base units with wash hand basin, heated towel rail and double glazed frosted window to the rear elevation.

UPSTAIRS WC

Separate low-level w.c with double glazed frosted window to the side elevation.

OUTSIDE & GARDENS

A fantastic rear garden having patio and raised decking area with summer house/bar ideal for entertaining friends and family. Having a generously seized lawned area with secure fence boarder as well as great sized work shop/storage to the bottom of the garden. To the front of the property offers a generous concreted driveway as well as additional parking on a recently laid tarmac driveway in front of the property.

DIRECTIONAL NOTE

When approaching from Ilkeston, take Stanton Road A6096 , follow the A 6096 turn left onto Wellbeck Avenue the left onto Kenilworth Drive, then second left onto Queen Elizabeth Way .

SPECIFIC REQUIREMENTS

The property is let unfurnished. No Smokers. Available from 19th August 2024.

PROPERTY RESERVATION FEE

DEPOSIT

5 Weeks Rent.

ADDITIONAL INFORMATION

Property construction: Brick & Tile

Parking: Driveway

Electricity supply: MAINS -

Gas Supply: Mains

Water supply: MAINS - Severn Trent

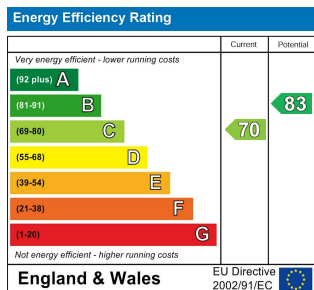
Sewerage: MAINS

Heating: Gas Central Heating

Broadband type: BT Openreach, please check Ofcom website.

VIEWING

Strictly by appointment through Scargill Mann & Co 01332 206620.



SALES OFFICE
 Unit 17 Eastgate Business Centre
 Eastern Avenue
 Burton upon Trent
 DE13 0AT
 T: 01283 548194 /01332 208820
 E: sales@scargillmann.co.uk

LETTINGS OFFICE
 17 Mallard Way
 Pride Park
 Derby
 DE24 8GX
 T: 01332 206620
 E: lettings@scargillmann.co.uk